

## LEVEL 1 OR

assesses, evolves and justifies



actions to be taken



investments to be made

to protect critical assets against security threats

## WHO SHOULD USE IT?



Security practitioners

Security managers

## WHAT SHOULD YOU USE IT FOR?



Assessing security risks



Identifying risk mitigation options



Justifying the actions and investments

## WHAT WILL IT GIVE YOU?

### A strategic security plan



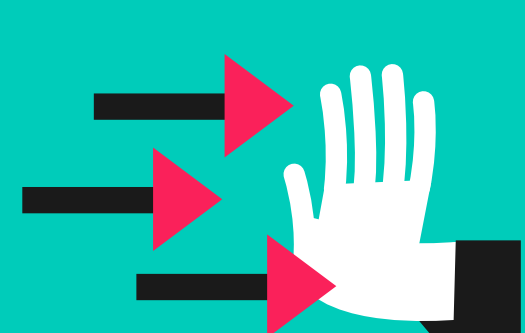
A statement of how your organisation's security needs will be met. Use this to create a business case and form the basis of a Level 2 OR

### Investment support



A business case you can present to senior decision makers to gain support for investment

### Measures proportionate to risk



Your organisation will be better able to understand the risk they face and implement measures which are proportionate to these risks

21%

of organisations had not briefed their Board on security risks in a year.<sup>1</sup>

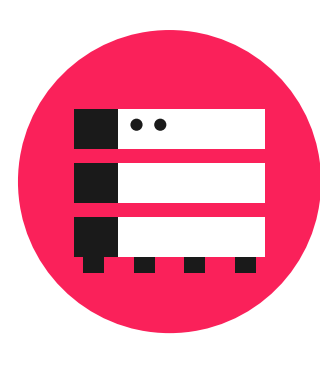
Using a Level 1 OR will demonstrate that your organisation is aligned with the key principles for a more secure organisation

See the Passport to Good Security for more information.

## HOW DOES IT ALL WORK?



## WHAT'S THE PROCESS?



Identify all assets to be protected, highlighting those that are critical

- Identify stakeholders
- Prioritise assets



Identify threats and vulnerabilities

- Who might be a threat to your organisation?
- What is their intent, capability and culture?
- How vulnerable is your organisation and critical assets?



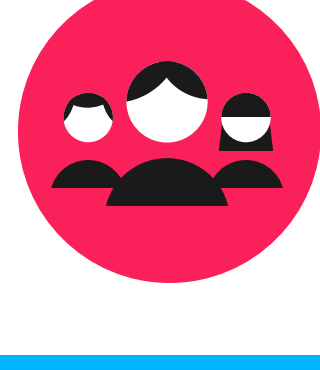
Assess the risks

- Combine likelihood of attack with impact on assets
- Involve stakeholders



Identify risk mitigation options and develop a strategic security plan

- Prioritise risks and specify risk treatment approach
- Decide which components you need in the plan and how you will integrate them



Review organisational readiness to deliver the strategic security plan

- How capable and ready is your organisation to implement the proposed plan?

The strategic security plan should ensure your organisation takes a proportionate defence-in-depth approach to the adoption of security measures

Going to level 2 will help you work through the details of individual security measures for your project teams to take forward